

West Saanich Rd between Hartland Ave and Ave And Wallace Dr

March 31, 2019 To April 05, 2019



The data presented here is for information purposes only and should not be considered authoritative for construction, geotechnical, engineering, navigational, legal, or other site-specific uses. The information shared is owned by the Transportation Division of the Engineering Department at the District of Saanich. Accuracy is not guaranteed.

Start Date: 1-Apr-19
 Start Time: 0:00
 Station ID: M0040-03

Location 1: West Saanich Rd between Hartland Ave and Ave And Wallace Dr
 Note: Hartland Ave and Wallace Dr

DATE:	April 1, 2019		April 2, 2019		April 3, 2019		April 4, 2019		April 5, 2019		WK AVG		WK AVG	HOURLY
Time:	MON		TUE		WED		THURS		FRI		NB	SB	CH 1+2	%
	NB	SB	NB	SB	NB	SB	NB	SB	NB	SB	NB	SB		
12-1 AM					16	7	16	10	15	9	16	9	24	0.2%
1-2 AM					8	3	4	2	8	3	7	3	9	0.1%
2-3 AM					5	4	4	2	8	4	6	3	9	0.1%
3-4 AM					6	7	4	5	1	4	4	5	9	0.1%
4-5 AM					17	11	14	13	12	9	14	11	25	0.2%
5-6 AM					49	55	48	37	48	43	48	45	93	0.8%
6-7 AM					248	192	234	183	248	198	243	191	434	3.7%
7-8 AM					309	494	300	502	315	507	308	501	809	6.9%
8-9 AM					384	542	340	530	353	540	359	537	896	7.6%
9-10 AM					357	374	326	379	326	394	336	382	719	6.1%
10-11 AM					334	342	290	351	303	338	309	344	653	5.5%
11-12 PM					328	375	322	354	362	344	337	358	695	5.9%
12-1 PM					383	390	351	382	395	424	376	399	775	6.6%
1-2 PM					364	386	366	413	336	423	355	407	763	6.5%
2-3 PM					414	431	389	413	414	440	406	428	834	7.1%
3-4 PM					487	662	463	652	551	654	500	656	1156	9.8%
4-5 PM					606	641	578	624	699	670	628	645	1273	10.8%
5-6 PM					544	450	510	433	569	529	541	471	1012	8.6%
6-7 PM					270	308	295	273	308	315	291	299	590	5.0%
7-8 PM					201	175	194	168	211	228	202	190	392	3.3%
8-9 PM					164	101	145	99	187	136	165	112	277	2.4%
9-10 PM					106	59	103	72	144	91	118	74	192	1.6%
10-11 PM					59	31	59	30	71	26	63	29	92	0.8%
11-12 AM					29	9	41	18	39	21	36	16	52	0.4%
LANES					5688	6049	5396	5945	5923	6350	5669	6115	11784	100.0%
TOTAL					11737		11341		12273		11790			
	MON		TUE		WED		THURS		FRI		WK AVG			

PEAK HOUR					TOTAL VEHICALS-PEAK PERIODS		2 HOUR PEAK INTERVALS			
MAX. 7 - 9 am PEAK HOUR	896	⇒	7.6%	between 8-9 AM	5460	⇒ 6 HR TOTAL	2 HR AM (7 - 9 AM)			
MAX. 7 - 11 am PEAK HOUR	896	⇒	7.6%	between 8-9 AM	3990	⇒ 4 HR TOTAL	VEH / HR	VEH / 2HR	2 HR %	
							7-8 AM	809	1705	14.5%
							8-9 AM	896		
MAX. 11 am - 1 pm PEAK HOUR	775	⇒	6.6%	between 12-1 PM	2 HR NOON (11 - 1 PM)					
MAX. 11 am - 3 pm PEAK HOUR	834	⇒	7.1%	between 2-3 PM	24 HOUR FACTORS					
					2.16	⇒ 6-24 HR FACT.	VEH / HR	VEH / 2HR	2 HR %	
MAX. 4 - 6 pm PEAK HOUR	1273	⇒	10.8%	between 4-5 PM			11-12 PM	695	1470	12.5%
MAX. 3 - 6 pm PEAK HOUR	1273	⇒	10.8%	between 4-5 PM	2.95	⇒ 4-24 HR FACT.	12-1 PM	775		
							2 HR PM (4 - 6 PM)			
							VEH / HR	VEH / 2HR	2 HR %	
							4-5 PM	1273	2284	19.4%
							5-6 PM	1012		

West Saanich Rd between Hartland Ave and Ave And Wallace Dr

Northbound

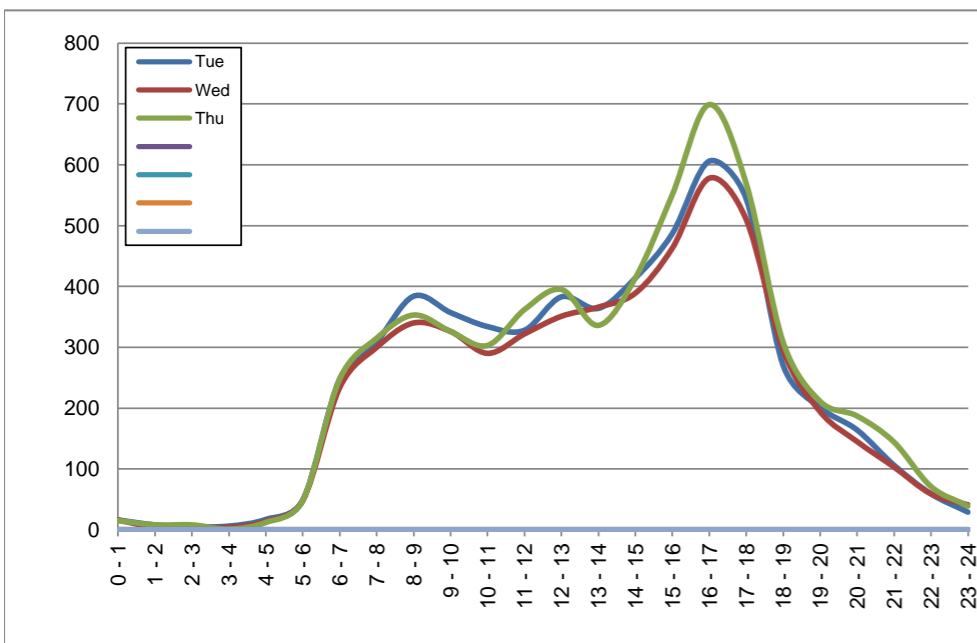
April 2, 2019 to April 4, 2019

Hourly Volumes

Time Period	Tue	Wed	Thu			
	Apr 2	Apr 3	Apr 4			
0 - 1	16	16	15			
1 - 2	8	4	8			
2 - 3	5	4	8			
3 - 4	6	4	1			
4 - 5	17	14	12			
5 - 6	49	48	48			
6 - 7	248	234	248			
7 - 8	309	300	315			
8 - 9	384	340	353			
9 - 10	357	326	326			
10 - 11	334	290	303			
11 - 12	328	322	362			
12 - 13	383	351	395			
13 - 14	364	366	336			
14 - 15	414	389	414			
15 - 16	487	463	551			
16 - 17	606	578	699			
17 - 18	544	510	569			
18 - 19	270	295	308			
19 - 20	201	194	211			
20 - 21	164	145	187			
21 - 22	106	103	144			
22 - 23	59	59	71			
23 - 24	29	41	39			
Day Total	5688	5396	5923			

15-Minute Volumes

Time Start	Tue	Wed	Thu				Time Start	Tue	Wed	Thu			
	Apr 2	Apr 3	Apr 4					Apr 2	Apr 3	Apr 4			
0:00	7	5	3				12:00	98	114	103			
0:15	6	6	7				12:15	92	84	98			
0:30	2	3	4				12:30	97	78	105			
0:45	1	2	1				12:45	96	75	89			
1:00	1	1	2				13:00	74	82	87			
1:15	2	1	1				13:15	105	97	79			
1:30	3	2	3				13:30	105	96	77			
1:45	2	0	2				13:45	80	91	93			
2:00	1	1	2				14:00	121	95	109			
2:15	1	0	1				14:15	96	93	105			
2:30	0	1	1				14:30	84	102	98			
2:45	3	2	4				14:45	113	99	102			
3:00	1	1	0				15:00	112	119	125			
3:15	1	0	0				15:15	122	98	145			
3:30	2	0	0				15:30	118	124	118			
3:45	2	3	1				15:45	135	122	163			
4:00	2	1	0				16:00	158	135	191			
4:15	4	3	2				16:15	151	134	171			
4:30	4	4	3				16:30	162	160	184			
4:45	7	6	7				16:45	135	149	153			
5:00	8	5	6				17:00	164	135	150			
5:15	9	9	10				17:15	132	132	161			
5:30	10	13	12				17:30	121	128	108			
5:45	22	21	20				17:45	127	115	150			
6:00	33	25	28				18:00	75	88	86			
6:15	51	53	57				18:15	80	78	70			
6:30	88	74	87				18:30	60	69	72			
6:45	76	82	76				18:45	55	60	80			
7:00	61	72	70				19:00	60	45	62			
7:15	64	64	66				19:15	57	59	64			
7:30	76	77	66				19:30	42	38	52			
7:45	108	87	113				19:45	42	52	33			
8:00	90	71	96				20:00	42	44	48			
8:15	83	95	65				20:15	43	35	59			
8:30	109	75	89				20:30	39	30	40			
8:45	102	99	103				20:45	40	36	40			
9:00	93	86	93				21:00	26	27	27			
9:15	81	80	87				21:15	30	20	38			
9:30	80	89	71				21:30	25	29	42			
9:45	103	71	75				21:45	25	27	37			
10:00	81	73	76				22:00	19	19	19			
10:15	84	83	71				22:15	16	14	26			
10:30	95	56	83				22:30	11	15	19			
10:45	74	78	73				22:45	13	11	7			
11:00	84	86	97				23:00	9	14	10			
11:15	77	79	98				23:15	9	12	15			
11:30	96	73	90				23:30	3	6	6			
11:45	71	84	77				23:45	8	9	8			



Site notes:

West Saanich Rd between Hartland Ave and Ave And Wallace Dr

Southbound

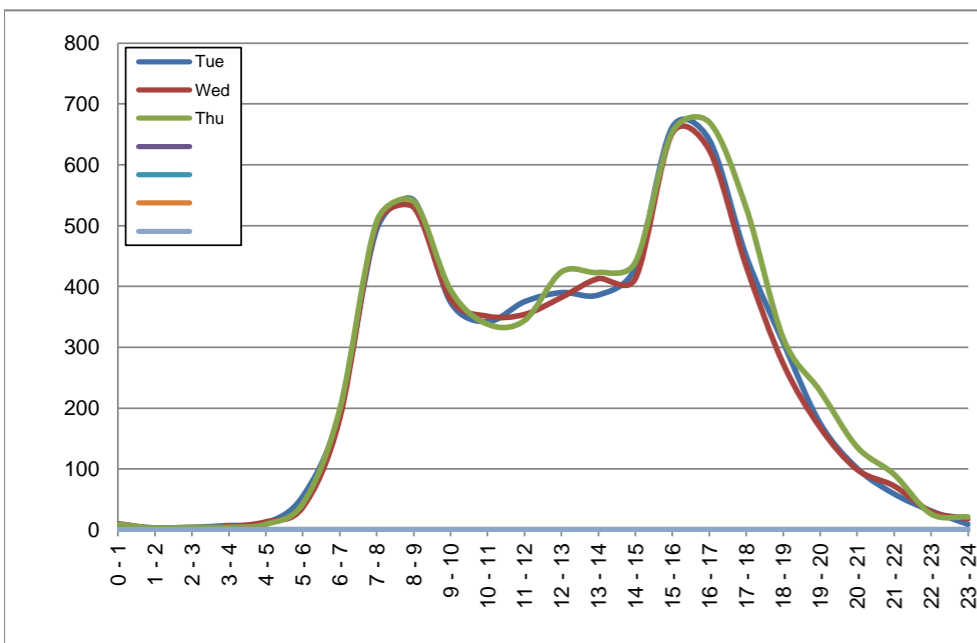
April 2, 2019 to April 4, 2019

Hourly Volumes

Time Period	Tue	Wed	Thu			
	Apr 2	Apr 3	Apr 4			
0 - 1	7	10	9			
1 - 2	3	2	3			
2 - 3	4	2	4			
3 - 4	7	5	4			
4 - 5	11	13	9			
5 - 6	55	37	43			
6 - 7	192	183	198			
7 - 8	494	502	507			
8 - 9	542	530	540			
9 - 10	374	379	394			
10 - 11	342	351	338			
11 - 12	375	354	344			
12 - 13	390	382	424			
13 - 14	386	413	423			
14 - 15	431	413	440			
15 - 16	662	652	654			
16 - 17	641	624	670			
17 - 18	450	433	529			
18 - 19	308	273	315			
19 - 20	175	168	228			
20 - 21	101	99	136			
21 - 22	59	72	91			
22 - 23	31	30	26			
23 - 24	9	18	21			
Day Total	6049	5945	6350			

15-Minute Volumes

Time Start	Tue	Wed	Thu				Time Start	Tue	Wed	Thu			
	Apr 2	Apr 3	Apr 4					Apr 2	Apr 3	Apr 4			
0:00	5	1	3				12:00	95	99	104			
0:15	1	3	3				12:15	87	80	106			
0:30	0	3	1				12:30	108	98	105			
0:45	1	3	2				12:45	100	105	109			
1:00	2	0	0				13:00	85	82	101			
1:15	0	0	1				13:15	101	114	123			
1:30	1	2	1				13:30	100	111	100			
1:45	0	0	1				13:45	100	106	99			
2:00	3	1	1				14:00	100	95	97			
2:15	0	0	1				14:15	101	93	106			
2:30	0	0	0				14:30	99	114	128			
2:45	1	1	2				14:45	131	111	109			
3:00	2	0	1				15:00	130	133	145			
3:15	3	2	1				15:15	155	155	140			
3:30	0	2	1				15:30	214	191	200			
3:45	2	1	1				15:45	163	173	169			
4:00	1	1	1				16:00	160	165	165			
4:15	3	5	3				16:15	157	152	163			
4:30	5	4	1				16:30	152	159	160			
4:45	2	3	4				16:45	172	148	182			
5:00	5	6	2				17:00	124	132	154			
5:15	12	8	9				17:15	147	127	160			
5:30	19	12	15				17:30	88	96	110			
5:45	19	11	17				17:45	91	78	105			
6:00	25	29	30				18:00	90	94	98			
6:15	38	44	30				18:15	64	58	74			
6:30	61	50	70				18:30	80	67	72			
6:45	68	60	68				18:45	74	54	71			
7:00	88	115	96				19:00	63	46	70			
7:15	112	104	109				19:15	38	49	57			
7:30	133	122	140				19:30	36	33	57			
7:45	161	161	162				19:45	38	40	44			
8:00	139	142	157				20:00	30	31	42			
8:15	149	147	140				20:15	27	18	36			
8:30	141	130	140				20:30	29	21	35			
8:45	113	111	103				20:45	15	29	23			
9:00	104	100	100				21:00	13	29	17			
9:15	96	103	104				21:15	20	23	20			
9:30	90	89	98				21:30	10	8	39			
9:45	84	87	92				21:45	16	12	15			
10:00	83	92	86				22:00	13	9	3			
10:15	97	85	81				22:15	6	6	7			
10:30	87	95	87				22:30	7	11	9			
10:45	75	79	84				22:45	5	4	7			
11:00	93	97	74				23:00	3	1	5			
11:15	96	87	83				23:15	3	8	7			
11:30	87	95	101				23:30	2	9	4			
11:45	99	75	86				23:45	1	0	5			



Site notes:

Vehicle Speed Summary

Saanich Engineering Department

Count Id: [M0040-03](#)

Filename: [West Saanich Rd between Hartland Ave and Ave And Wallace Dr-Apr-2019.xlsm](#)

Location: West Saanich Rd between Hartland Ave and Ave And Wallace Dr

Note: Hartland Ave and Wallace Dr

Direction: **North-South**

Dates: **March 31, 2019 To April 05, 2019**

Filtered data

AVG. SPEED	42 mph	67 km/h
50 % SPEED	42 mph	67 km/h
85 % SPEED	46 mph	74 km/h
95 % SPEED	49 mph	79 km/h

Location Map



West Saanich Rd between Hartland Ave and Ave And Wallace Dr

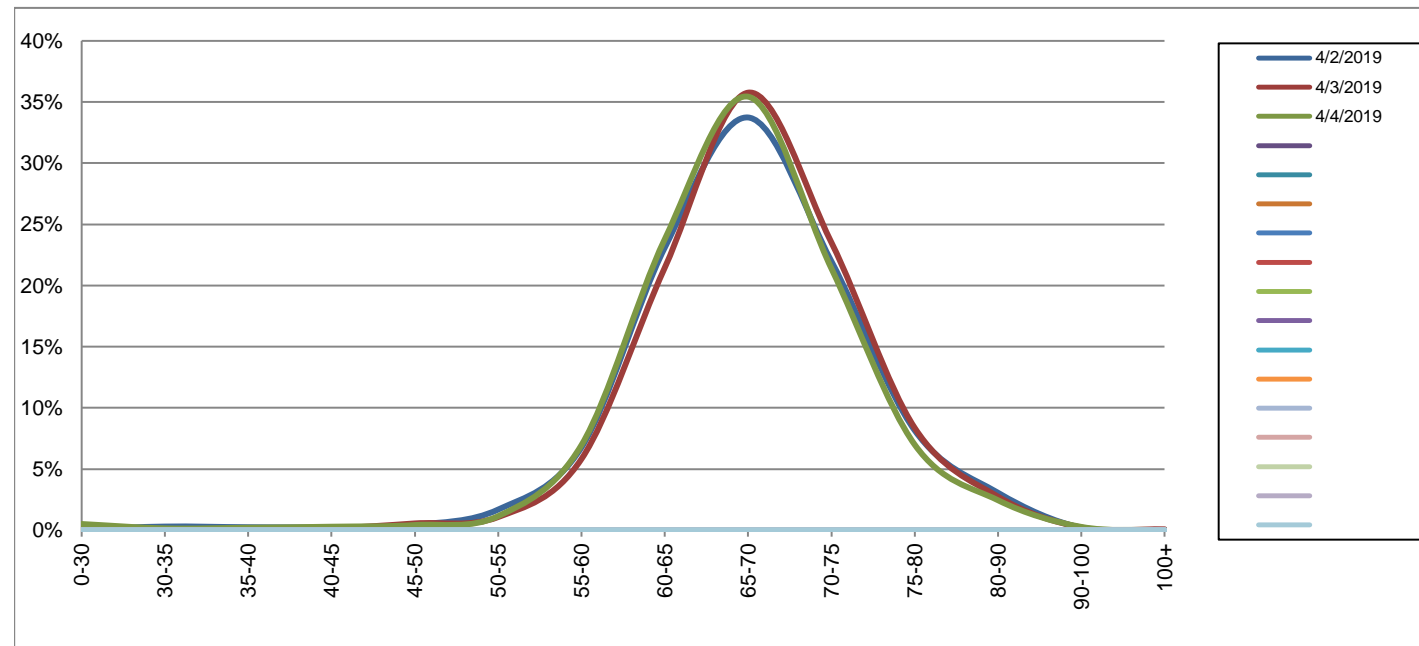
Northbound

April 2, 2019 to April 4, 2019

Daily Speed Bin Percentages														Daily Speed Bin Volumes														Total	Avg.	
Bin #	1	2	3	4	5	6	7	8	9	10	11	12	13	14	1	2	3	4	5	6	7	8	9	10	11	12	13	14	Volume	Speed
Bin Speeds	0-30	30-35	35-40	40-45	45-50	50-55	55-60	60-65	65-70	70-75	75-80	80-90	90-100	100+	0-30	30-35	35-40	40-45	45-50	50-55	55-60	60-65	65-70	70-75	75-80	80-90	90-100	100+		
4/2/2019	0.1%	0.3%	0.2%	0.2%	0.4%	1.7%	6.8%	23.1%	33.7%	22.0%	8.2%	3.1%	0.2%	0.0%	4	17	14	14	25	96	385	1314	1919	1250	464	174	11	1	5688	68
4/3/2019	0.1%	0.0%	0.1%	0.1%	0.6%	1.1%	5.8%	21.5%	35.8%	23.5%	8.4%	2.7%	0.2%	0.1%	8	1	5	8	30	58	314	1158	1930	1269	451	148	12	4	5396	68
4/4/2019	0.5%	0.2%	0.2%	0.3%	0.4%	1.1%	7.0%	23.8%	35.4%	21.4%	7.0%	2.4%	0.3%	0.0%	30	9	12	17	25	68	412	1409	2099	1267	414	145	16	0	5923	67
Total	0.2%	0.2%	0.2%	0.2%	0.5%	1.3%	6.5%	22.8%	35.0%	22.3%	7.8%	2.7%	0.2%	0.0%	42	27	31	39	80	222	1111	3881	5948	3786	1329	467	39	5	17007	68

Speed Data Summary

Bin #	1	2	3	4	5	6	7	8	9	10	11	12	13	14	Total
Bin Speeds	0-30	30-35	35-40	40-45	45-50	50-55	55-60	60-65	65-70	70-75	75-80	80-90	90-100	100+	
Survey Total	42	27	31	39	80	222	1111	3881	5948	3786	1329	467	39	5	17007
% Total	0.2%	0.2%	0.2%	0.2%	0.5%	1.3%	6.5%	22.8%	35.0%	22.3%	7.8%	2.7%	0.2%	0.0%	100%
Accumulated %	0.2%	0.4%	0.6%	0.8%	1.3%	2.6%	9.1%	31.9%	66.9%	89.2%	97.0%	99.7%	100.0%	100%	
Inverse Accum. %	99.8%	99.6%	99.4%	99.2%	98.7%	97.4%	90.9%	68.1%	33.1%	10.8%	3.0%	0.3%	0.0%	0.0%	
Average Speed	68 KM/H														



Site notes:

West Saanich Rd between Hartland Ave and Ave And Wallace Dr

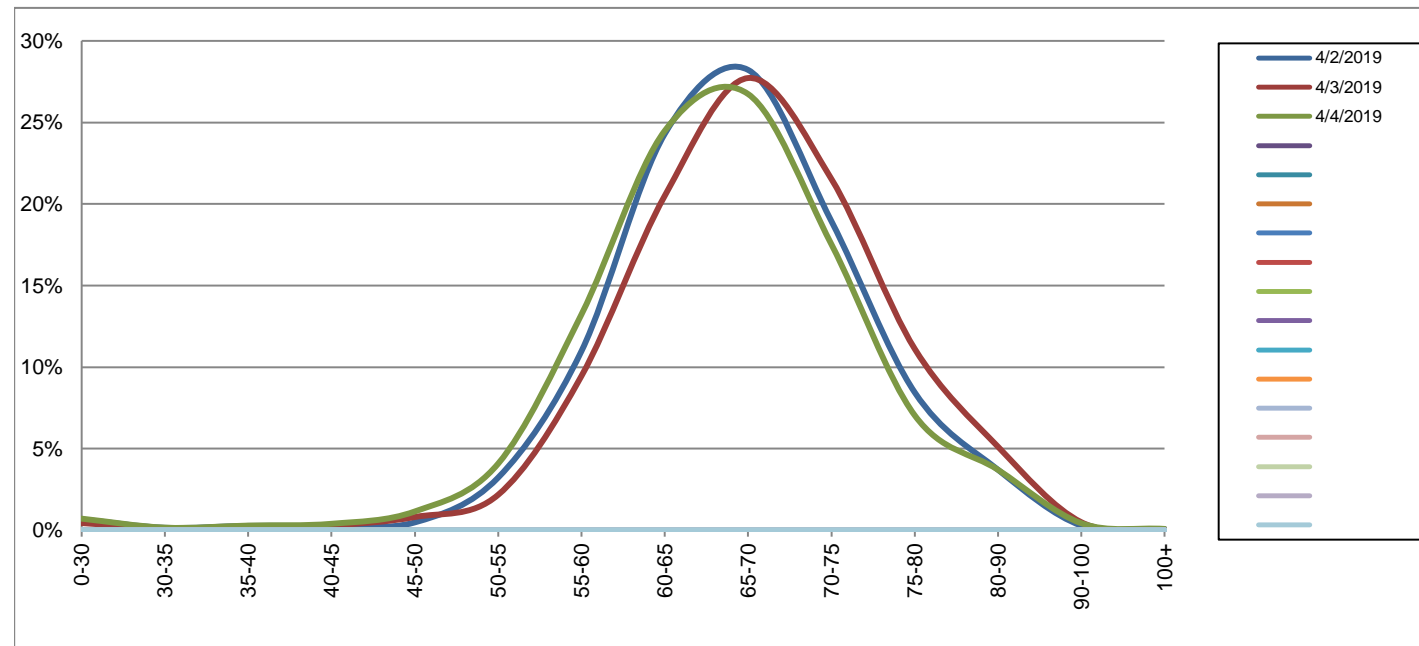
Southbound

April 2, 2019 to April 4, 2019

Daily Speed Bin Percentages														Daily Speed Bin Volumes														Total	Avg.	
Bin #	1	2	3	4	5	6	7	8	9	10	11	12	13	14	1	2	3	4	5	6	7	8	9	10	11	12	13	14	Volume	Speed
Bin Speeds	0-30	30-35	35-40	40-45	45-50	50-55	55-60	60-65	65-70	70-75	75-80	80-90	90-100	100+	0-30	30-35	35-40	40-45	45-50	50-55	55-60	60-65	65-70	70-75	75-80	80-90	90-100	100+		
4/2/2019	0.7%	0.1%	0.3%	0.3%	0.5%	3.2%	11.0%	24.3%	28.2%	18.9%	8.4%	3.7%	0.3%	0.1%	40	9	16	17	29	195	664	1470	1707	1146	511	224	17	4	6049	67
4/3/2019	0.4%	0.1%	0.2%	0.3%	0.8%	2.2%	9.5%	20.5%	27.7%	21.5%	11.1%	5.1%	0.5%	0.0%	26	7	12	18	48	129	562	1219	1648	1280	661	304	29	2	5945	68
4/4/2019	0.7%	0.2%	0.3%	0.4%	1.1%	4.1%	13.2%	24.5%	26.7%	17.5%	7.0%	3.7%	0.4%	0.1%	45	10	18	25	73	259	840	1555	1698	1113	447	235	27	5	6350	66
Total	0.6%	0.1%	0.3%	0.3%	0.8%	3.2%	11.3%	23.1%	27.5%	19.3%	8.8%	4.2%	0.4%	0.1%	111	26	46	60	150	583	2066	4244	5053	3539	1619	763	73	11	18344	67

Speed Data Summary

Bin #	1	2	3	4	5	6	7	8	9	10	11	12	13	14	Total
Bin Speeds	0-30	30-35	35-40	40-45	45-50	50-55	55-60	60-65	65-70	70-75	75-80	80-90	90-100	100+	
Survey Total	111	26	46	60	150	583	2066	4244	5053	3539	1619	763	73	11	18344
% Total	0.6%	0.1%	0.3%	0.3%	0.8%	3.2%	11.3%	23.1%	27.5%	19.3%	8.8%	4.2%	0.4%	0.1%	100%
Accumulated %	0.6%	0.7%	1.0%	1.3%	2.1%	5.3%	16.6%	39.7%	67.3%	86.6%	95.4%	99.5%	99.9%	100%	
Inverse Accum. %	99.4%	99.3%	99.0%	98.7%	97.9%	94.7%	83.4%	60.3%	32.7%	13.4%	4.6%	0.5%	0.1%	0.0%	
Average Speed	67 KM/H														



Site notes:

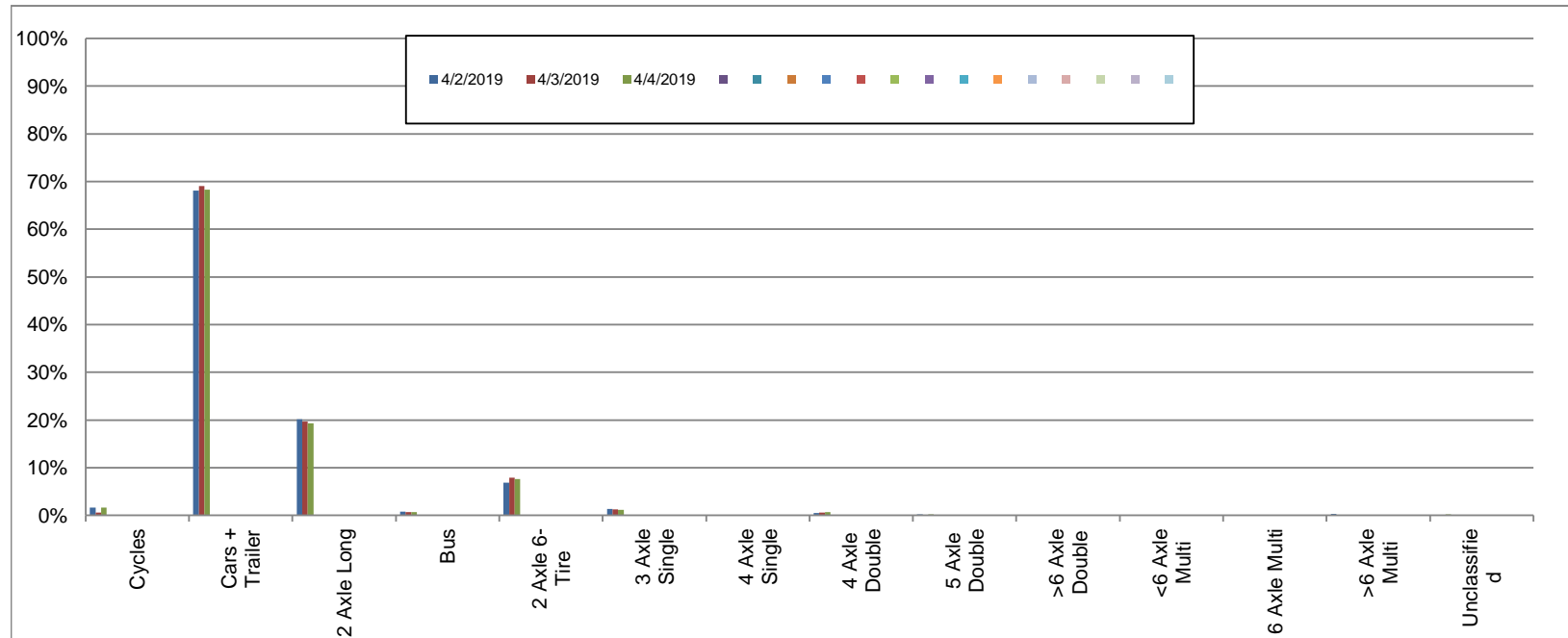
West Saanich Rd between Hartland Ave and Ave And Wallace Dr

Northbound
April 2, 2019 to April 4, 2019

Daily Class Bin Percentages															Daily Class Bin Volumes														
Bin #	1	2	3	4	5	6	7	8	9	10	11	12	13	14	1	2	3	4	5	6	7	8	9	10	11	12	13	14	Total Volume
Bin Class	Cycles	Cars + Trailer	2 Axle Long	Bus	2 Axle 6-Tire	3 Axle Single	4 Axle Single	4 Axle Double	5 Axle Double	>6 Axle Double	<6 Axle Multi	6 Axle Multi	>6 Axle Multi	Unclassified	Cycles	Cars + Trailer	2 Axle Long	Bus	2 Axle 6-Tire	3 Axle Single	4 Axle Single	4 Axle Double	5 Axle Double	>6 Axle Double	<6 Axle Multi	6 Axle Multi	>6 Axle Multi	Unclassified	
4/2/2019	1.6%	68.1%	20.1%	0.8%	6.8%	1.3%	0.1%	0.5%	0.2%	0.1%	0.0%	0.0%	0.3%	0.1%	92	3874	1144	46	388	74	4	27	12	5	0	0	17	5	5688
4/3/2019	0.6%	69.0%	19.7%	0.6%	7.9%	1.2%	0.1%	0.6%	0.1%	0.1%	0.0%	0.0%	0.0%	0.1%	33	3725	1062	35	424	65	3	34	6	6	0	0	0	3	5396
4/4/2019	1.6%	68.3%	19.3%	0.7%	7.6%	1.2%	0.0%	0.7%	0.2%	0.1%	0.0%	0.0%	0.0%	0.2%	96	4045	1142	42	452	71	2	43	10	7	0	0	2	11	5923
Total	1.3%	68.5%	19.7%	0.7%	7.4%	1.2%	0.1%	0.6%	0.2%	0.1%	0.0%	0.0%	0.1%	0.1%	221	11644	3348	123	1264	210	9	104	28	18	0	0	19	19	17007

Class Data Summary

Bin #	1	2	3	4	5	6	7	8	9	10	11	12	13	14	Total Volume
Bin Class	Cycles	Cars + Trailer	2 Axle Long	Bus	2 Axle 6-Tire	3 Axle Single	4 Axle Single	4 Axle Double	5 Axle Double	>6 Axle Double	<6 Axle Multi	6 Axle Multi	>6 Axle Multi	Unclassified	Total Volume
Survey Total	221	11644	3348	123	1264	210	9	104	28	18	0	0	19	19	17007
% Total	1.3%	68.5%	19.7%	0.7%	7.4%	1.2%	0.1%	0.6%	0.2%	0.1%	0.0%	0.0%	0.1%	0.1%	100%
Accumulated %	1.3%	69.8%	89.5%	90.2%	97.6%	98.8%	98.9%	99.5%	99.7%	99.8%	99.8%	99.8%	99.9%	100.0%	
Inv. Accum. %	98.7%	30.2%	10.5%	9.8%	2.4%	1.2%	1.1%	0.5%	0.3%	0.2%	0.2%	0.2%	0.1%	0.0%	



Classification Descriptions

Bin #	Bin Description
1	Motorcycles
2	Passenger cars, including those with recreational trailers
3	2-axle pick-ups, vans, and RVs, including those with recreational trailers
4	Buses
5	2-axle, 6-tire single units
6	3-axle single units
7	4-axle single units
8	3-axle or 4-axle double unit
9	5-axle double unit
10	6-, 7-, or 8-axle double unit
11	5-axle multiple unit
12	6-axle multiple unit
13	7-or-more-axle multiple unit
14	Vehicles that could not be classified

Site notes:

West Saanich Rd between Hartland Ave and Ave And Wallace Dr

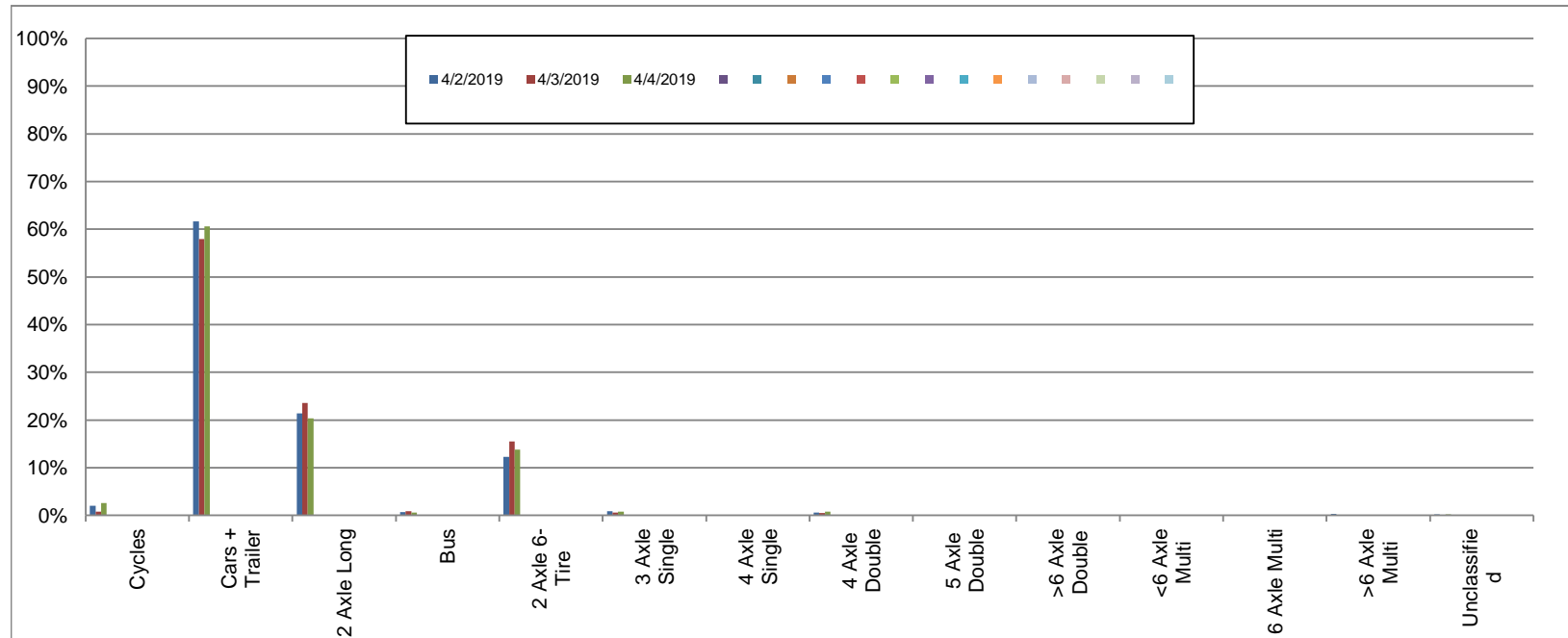
Southbound

April 2, 2019 to April 4, 2019

Daily Class Bin Percentages															Daily Class Bin Volumes											Total Volume			
Bin #	1	2	3	4	5	6	7	8	9	10	11	12	13	14	1	2	3	4	5	6	7	8	9	10	11		12	13	14
Bin Class	Cycles	Cars + Trailer	2 Axle Long	Bus	2 Axle 6-Tire	3 Axle Single	4 Axle Single	4 Axle Double	5 Axle Double	>6 Axle Double	<6 Axle Multi	6 Axle Multi	>6 Axle Multi	Unclassified	Cycles	Cars + Trailer	2 Axle Long	Bus	2 Axle 6-Tire	3 Axle Single	4 Axle Single	4 Axle Double	5 Axle Double	>6 Axle Double	<6 Axle Multi	6 Axle Multi	>6 Axle Multi	Unclassified	
4/2/2019	2.0%	61.7%	21.4%	0.7%	12.2%	0.8%	0.0%	0.5%	0.0%	0.0%	0.0%	0.0%	0.3%	0.2%	124	3731	1294	44	741	51	0	33	1	3	0	0	17	10	6049
4/3/2019	0.8%	58.0%	23.6%	0.8%	15.5%	0.6%	0.0%	0.5%	0.1%	0.1%	0.0%	0.0%	0.0%	0.1%	45	3447	1402	49	921	34	0	30	7	5	0	0	0	5	5945
4/4/2019	2.6%	60.6%	20.3%	0.6%	13.8%	0.8%	0.0%	0.7%	0.1%	0.1%	0.0%	0.0%	0.0%	0.3%	165	3849	1292	38	875	49	3	47	6	9	0	0	1	16	6350
Total	1.8%	60.1%	21.7%	0.7%	13.8%	0.7%	0.0%	0.6%	0.1%	0.1%	0.0%	0.0%	0.1%	0.2%	334	11027	3988	131	2537	134	3	110	14	17	0	0	18	31	18344

Class Data Summary

Bin #	1	2	3	4	5	6	7	8	9	10	11	12	13	14	Total Volume
Bin Class	Cycles	Cars + Trailer	2 Axle Long	Bus	2 Axle 6-Tire	3 Axle Single	4 Axle Single	4 Axle Double	5 Axle Double	>6 Axle Double	<6 Axle Multi	6 Axle Multi	>6 Axle Multi	Unclassified	Total Volume
Survey Total	334	11027	3988	131	2537	134	3	110	14	17	0	0	18	31	18344
% Total	1.8%	60.1%	21.7%	0.7%	13.8%	0.7%	0.0%	0.6%	0.1%	0.1%	0.0%	0.0%	0.1%	0.2%	100%
Accumulated %	1.8%	61.9%	83.7%	84.4%	98.2%	98.9%	99.0%	99.6%	99.6%	99.7%	99.7%	99.7%	99.8%	100.0%	
Inv. Accum. %	98.2%	38.1%	16.3%	15.6%	1.8%	1.1%	1.0%	0.4%	0.4%	0.3%	0.3%	0.3%	0.2%	0.0%	



Classification Descriptions

Bin #	Bin Description
1	Motorcycles
2	Passenger cars, including those with recreational trailers
3	2-axle pick-ups, vans, and RVs, including those with recreational trailers
4	Buses
5	2-axle, 6-tire single units
6	3-axle single units
7	4-axle single units
8	3-axle or 4-axle double unit
9	5-axle double unit
10	6-, 7-, or 8-axle double unit
11	5-axle multiple unit
12	6-axle multiple unit
13	7-or-more-axle multiple unit
14	Vehicles that could not be classified

Site notes: